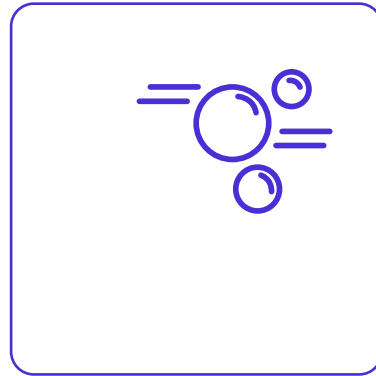
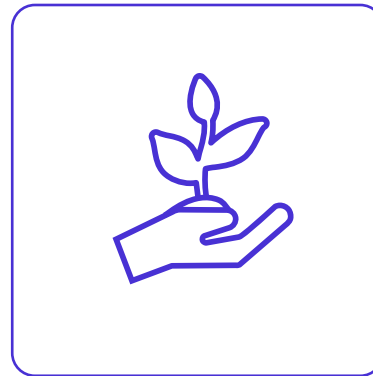


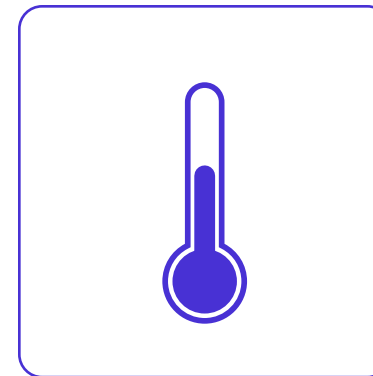
## Well-being (as a good life) and biodiversity



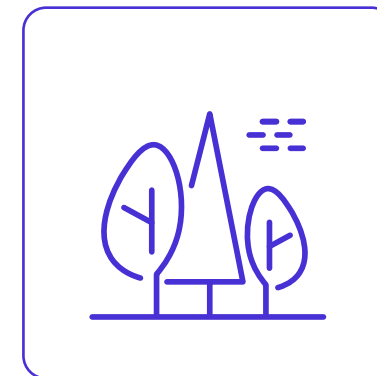
Direct GHG Mitigation



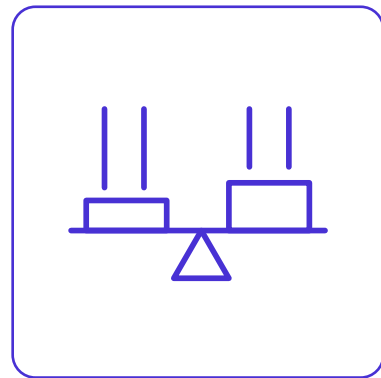
Indirect GHG Mitigation



Direct Air Quality Increase



Combatting Air Pollution

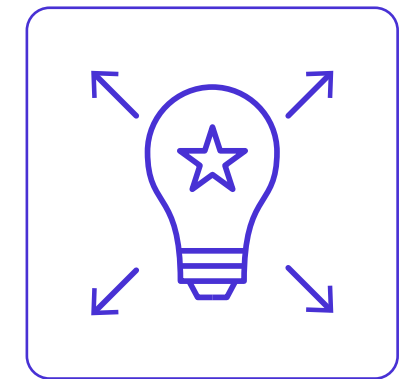


## Just Transformation

- Distribution benefits
- Empowerment
- Gender

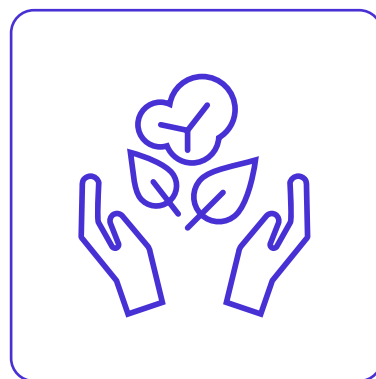


## City Practice Labs (CiPeLs)

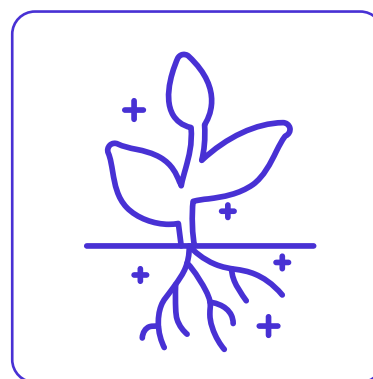


## 4 Innovative Dimensions

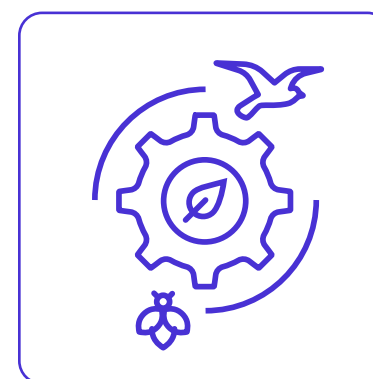
- Effective governance
- Enabling business models and market design
- Long-term maintenance
- Efficient technologies and applications



Conservation



Restoration



Management



Creation

## Biodiversity